

EarlyON Family COVID-19 Protocols

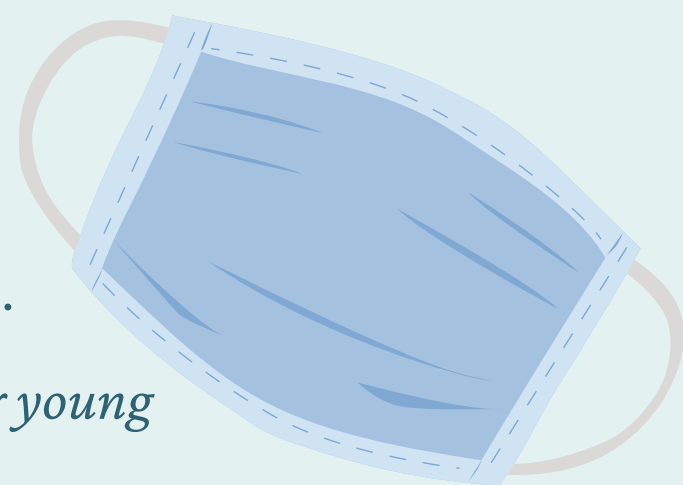
The following are some of the newly enhanced health and safety protocols that are in place to keep you and your loved ones safe during your visit.

Face coverings

Face coverings for adults are required while inside the centre.

Face coverings are not recommended for young children under the age of two (2).

The use of face coverings is encouraged for older children, yet not mandatory.



Registration

All families must register in advance of participating in EarlyON programming. Please visit our website for more information.

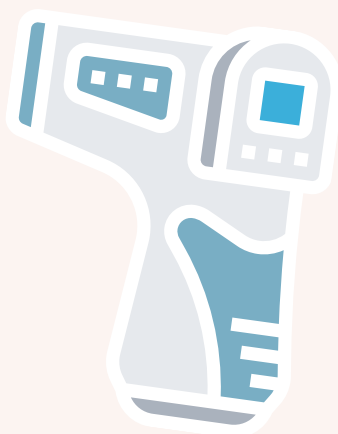
You may also register by calling one of our centres, and a Program Facilitator will assist you in registering.

REGISTRATION



Screening

All individuals including children, parents/caregivers and staff must be screened each day before entering an EarlyON Centre, including taking everyone's temperature at the door.



Wash your hands.

Practice good hand hygiene by washing your hands with soap and water or using alcohol based hand sanitizer.



Cleaning

Our centres have increased the frequency of cleaning and disinfecting, including toys, materials and high touch surface areas.



Respiratory Etiquette

Cover your sneeze using the bend of your elbow or a tissue. Avoid touching your eyes, nose and mouth

Storage

Please limit the amount of items you bring to the centre.

Just a note, there will be no snack served at the centres, and please no food or drink from outside the centre. Refillable water bottles and infant feeding bottles are acceptable.

Exclusion

If you answer "YES" to any of the questions on the provincial screenings, you may not visit the EarlyON Child and Family Centre.

Please follow the recommendations from the provincial website including contacting your local public health unit or doctor/health care provider for more advice.

Follow provincial recommendations for exclusion periods and the recommended timeline for isolation.



Practice Physical Distancing

Please maintain at least 2 metres (6 feet) distance from other family groupings. If this is not possible, please note the mandatory use of face coverings for adults is required.

